

TECHNOTE [10/2014]

DATE: January, 2014
AUTHOR: cardPresso TECHNICAL SUPPORT
PRODUCT/AREA: Encode

Change Duali De 620 to work in PC/SC mode

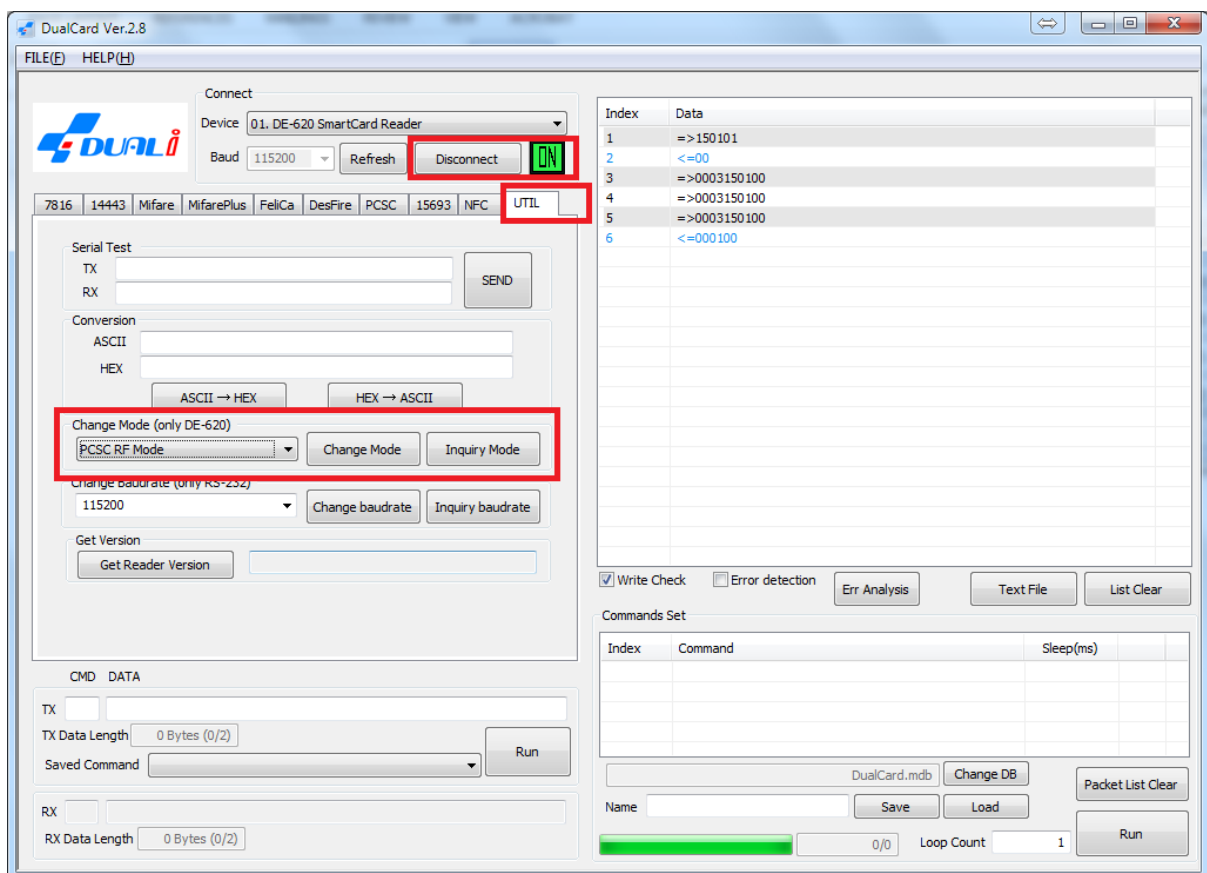
In order to use Mifare PC/SC Command on a Duali encoder, the encoder should have a minimum firmware version "DE-620_NFC_131217"

1 - Open DualCard.exe application.

If the reader displays with PCSC on it's name, please skip to step 3.

2 - If your reader does not display with PCSC on it's name:

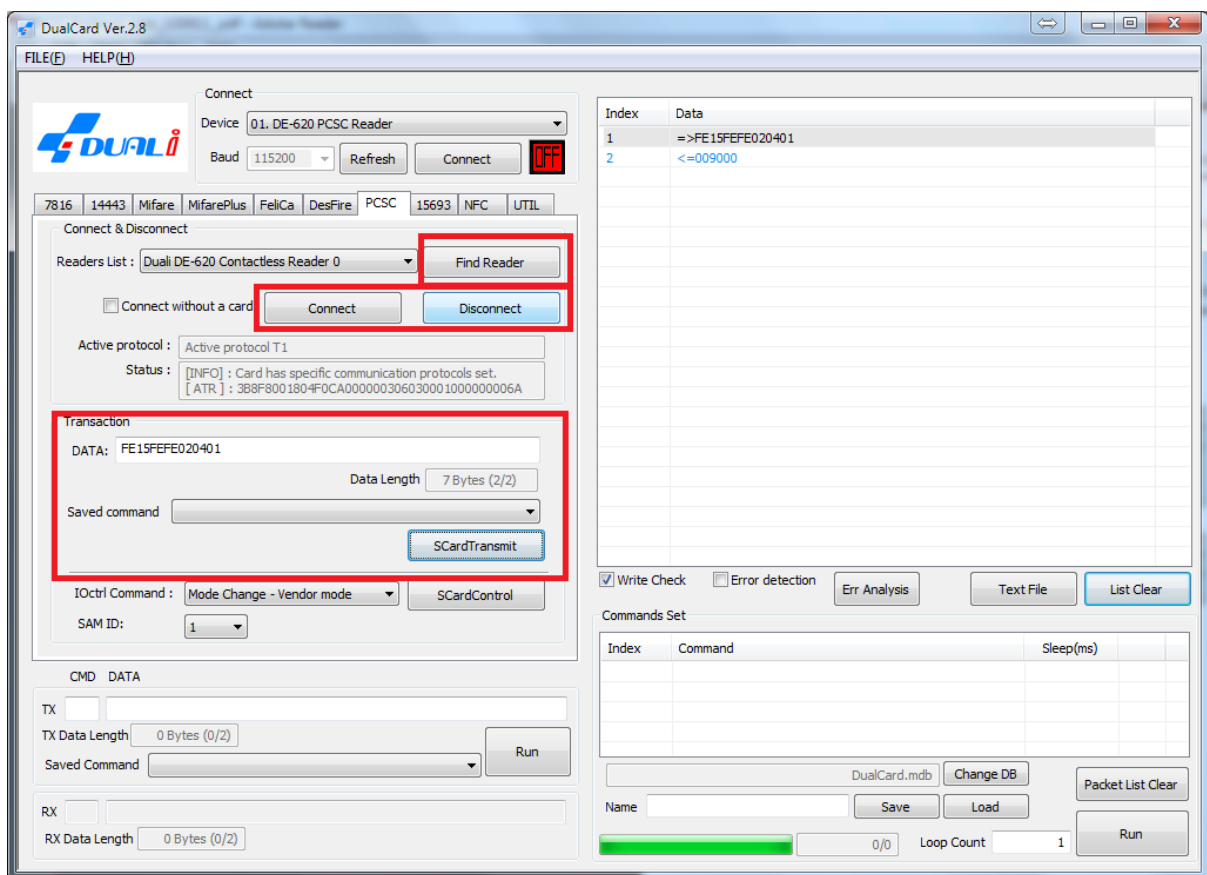
Connect to your encoder, and go to the "Util" tab. On this tab select "PCSC RF Mode" on the "Change Mode" Combobox, and press the button "Change Mode"



3. After a successful mode change, your encoder name will change to a string containing the word "PCSC".

Now click on the tab "PCSC".

For the next steps you will need to place a Mifare card near your encoder.



4 - Click on "Find Reader" button, and select your encoder from the list

5 - Click "Connect". **Make sure the Mifare card is in place.**

6 - On the Transaction DATA Edit Box, type the following command "FE15FEFE020401" without the quotes.

7 - Click on "SCardTransmit" button.

8 - Click on "Disconnect" button

9 - Close the application.

Now, the encoder should work with the Standard PC/SC Mode and ATR recognition.

10. Open cardPresso. The encoder should now be detected as a PCSC encoder on cardPresso's internal list.

To test it, you may run the following script:

```
card.timeout=30;// maximum waiting time for the card to be present

card.checkForDuplicates=true;// during printing each card must be different from the previous

card.waitForPresent("MIFARE.CLASSIC");

log("MEDIA TYPE:"+card.mediaType);

log("MEDIA S/N :"+card.UID );

log("MEDIA S/N reversed:"+card.UID_LSB );

mifare.key("A", "FFFFFFFFFFFF");

mifare.write(0,1, "CARDPRESSO_DUALI");

log(mifare.read(0,1).toUTF8());

card.UID;
```

After running the script, the output should be similar to:

