

## TECHNOTE [14/2014]

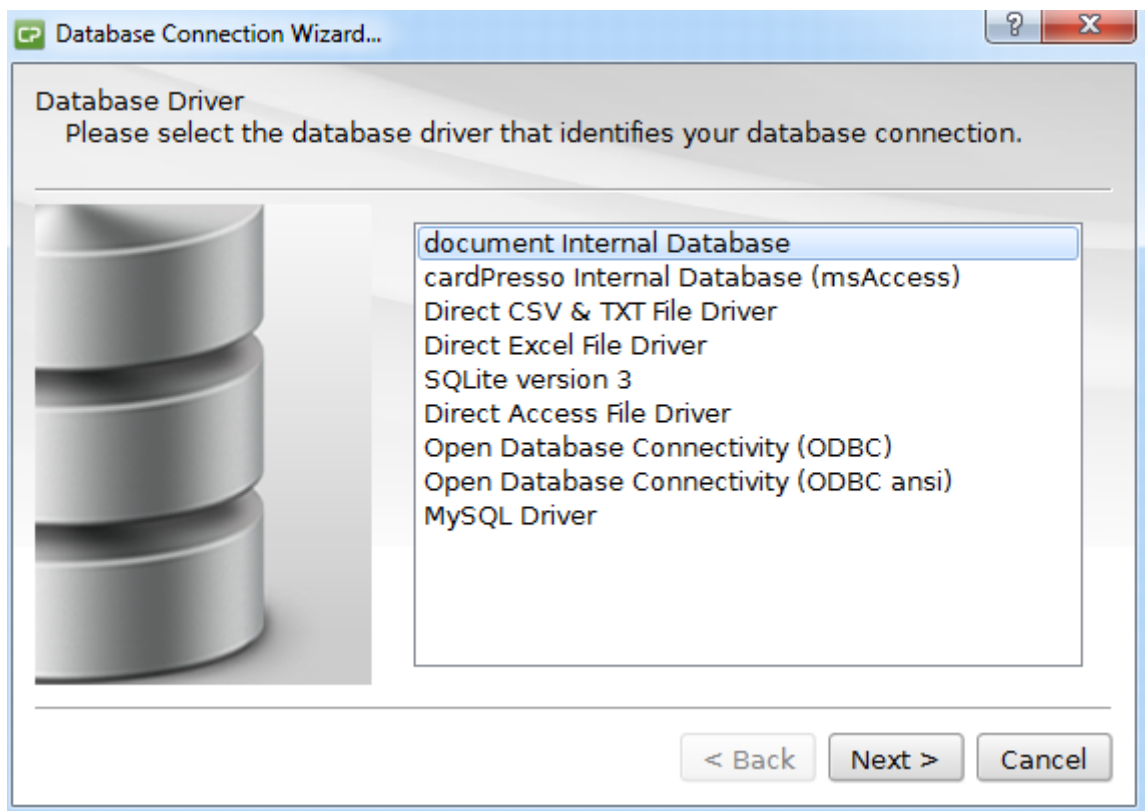
**DATE:** June, 2014  
**AUTHOR:** cardPresso TECHNICAL SUPPORT  
**PRODUCT/AREA:** Database

## Document Internal Database

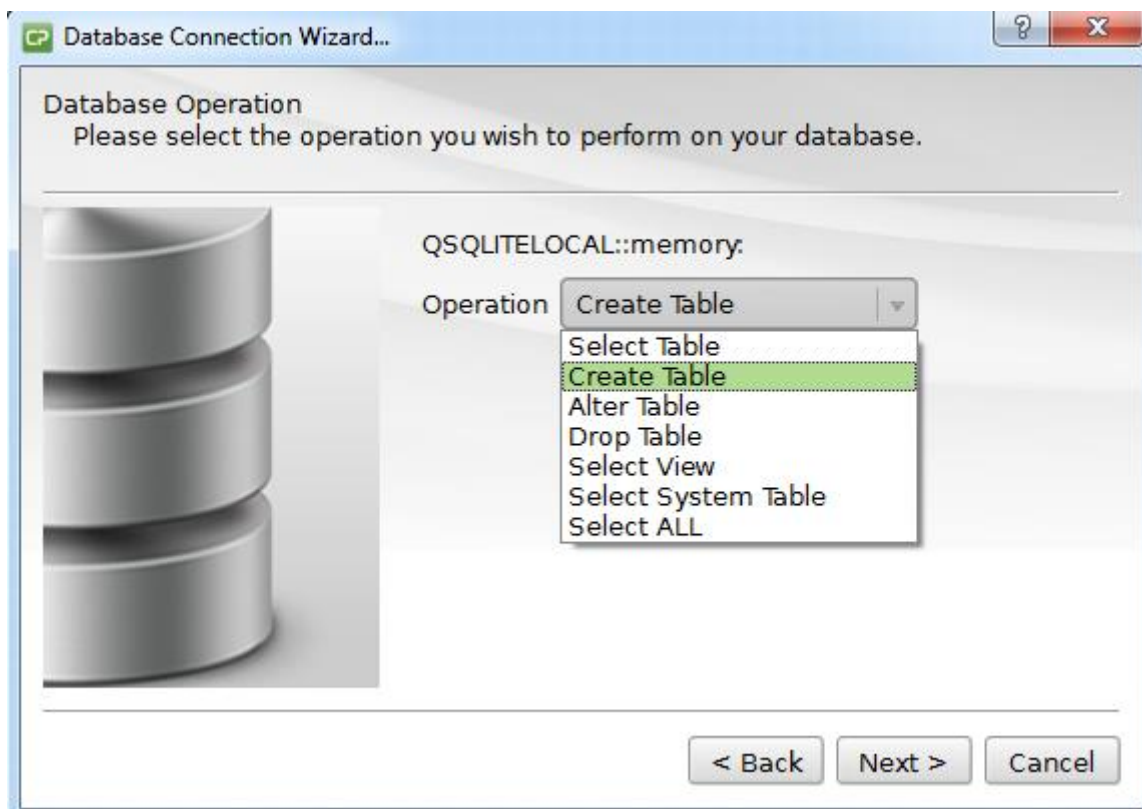
cardPresso's **Document Internal Database** is a SQL Lite database, saved with the .card file where it is created and only accessible through this same file.

To create it please follow the steps described below:

Open cardPresso's **Database Connection Wizard** and select the first option.



Select the **Create Table** option:



On the next step you'll be able to define your table name and create it's columns.

Database Connection Wizard...

SQL Create Table  
Please define table columns

Table Name  
Table1

Columns

Column nam	Data type	Type width	Allow r	Key	Auto Ir	Delete
ID	INTEGER		<input type="checkbox"/>	<input checked="" type="checkbox"/>	<input checked="" type="checkbox"/>	<input type="checkbox"/>

+

< Back   Next >   Cancel

After selecting the table you've just created proceed with the wizard, until finished.

