

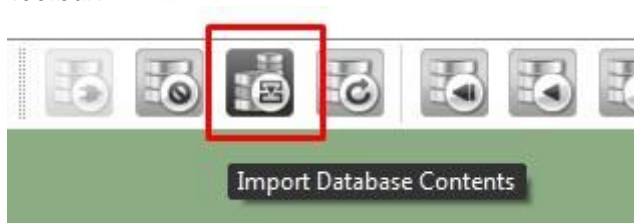
TECHNOTE [15/2014]

DATE: May, 2015
AUTHOR: cardPresso TECHNICAL SUPPORT
PRODUCT/AREA: Database

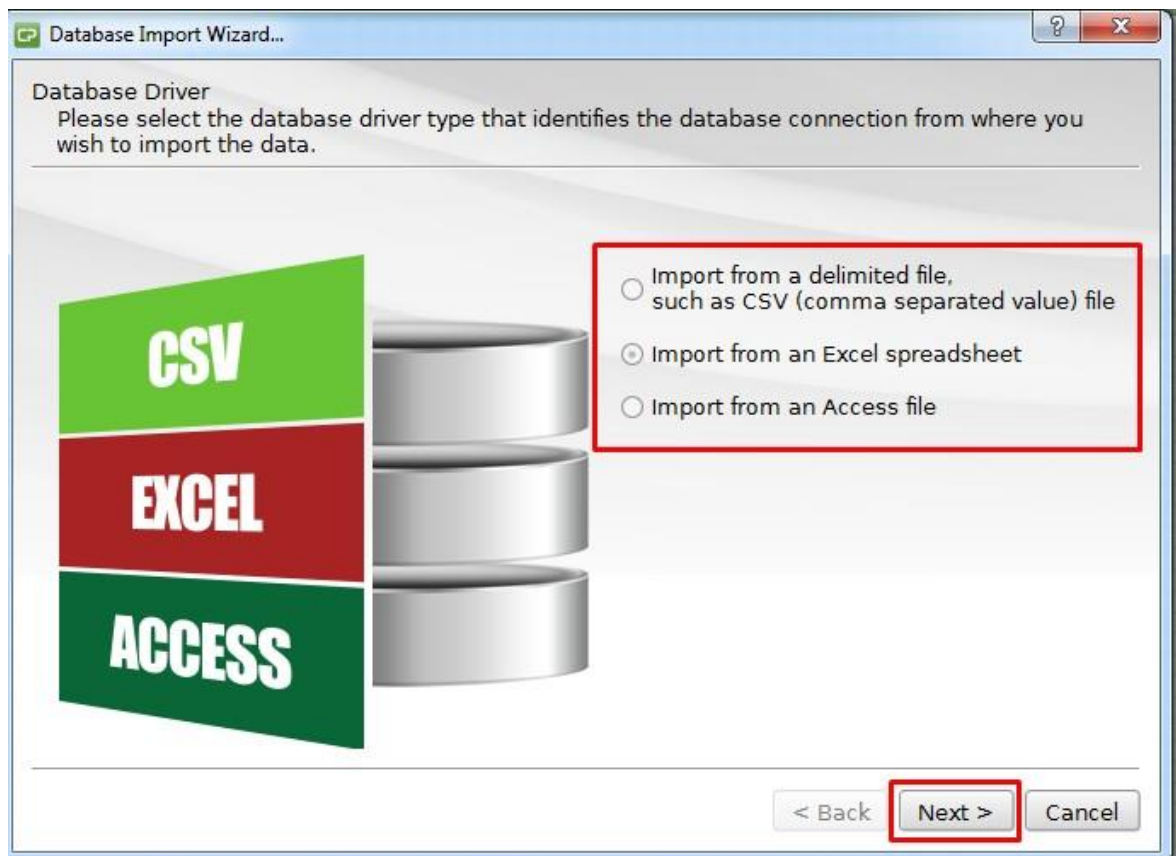
Subject: Database Import Wizard

The Database Import Wizard assists in importing the content of a CSV, Excel or Access database.

After connecting or generating a **database**, click on the **Import Database Contents** button on the toolbar.

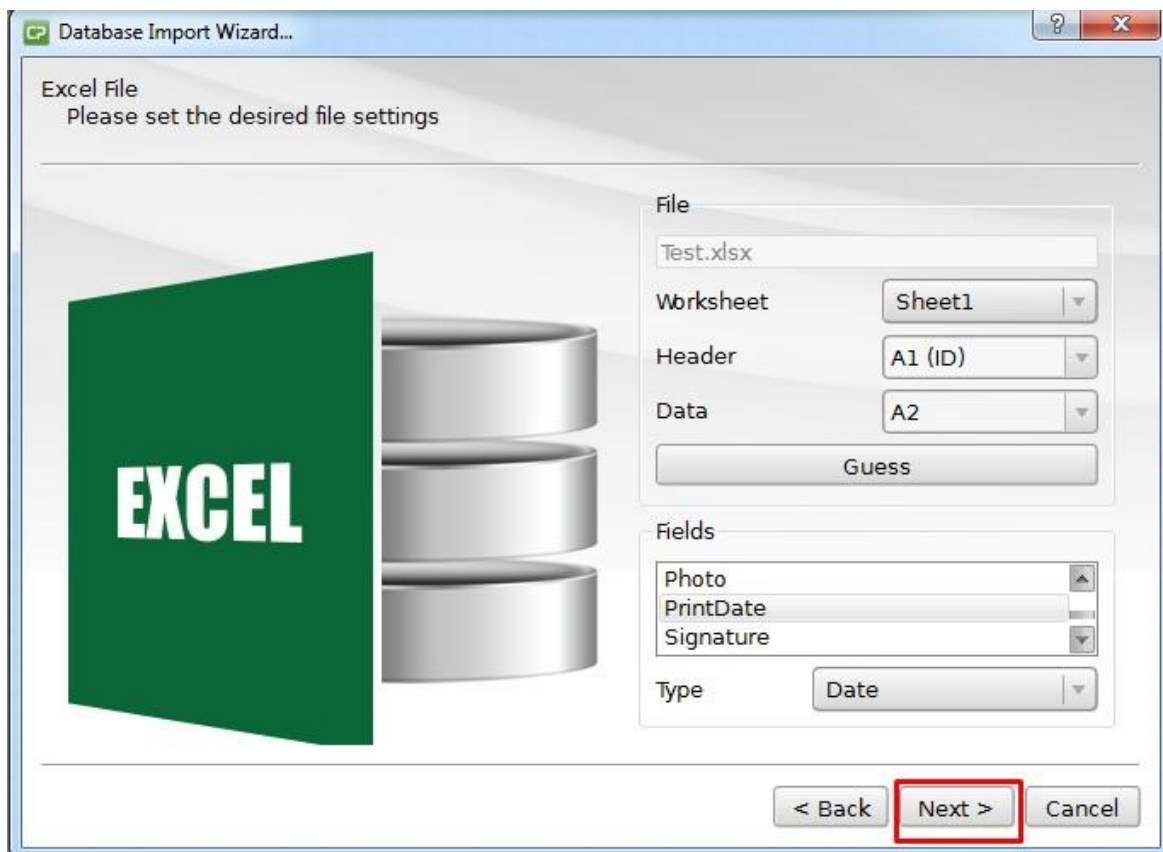


Select the database type from where the data will be imported.

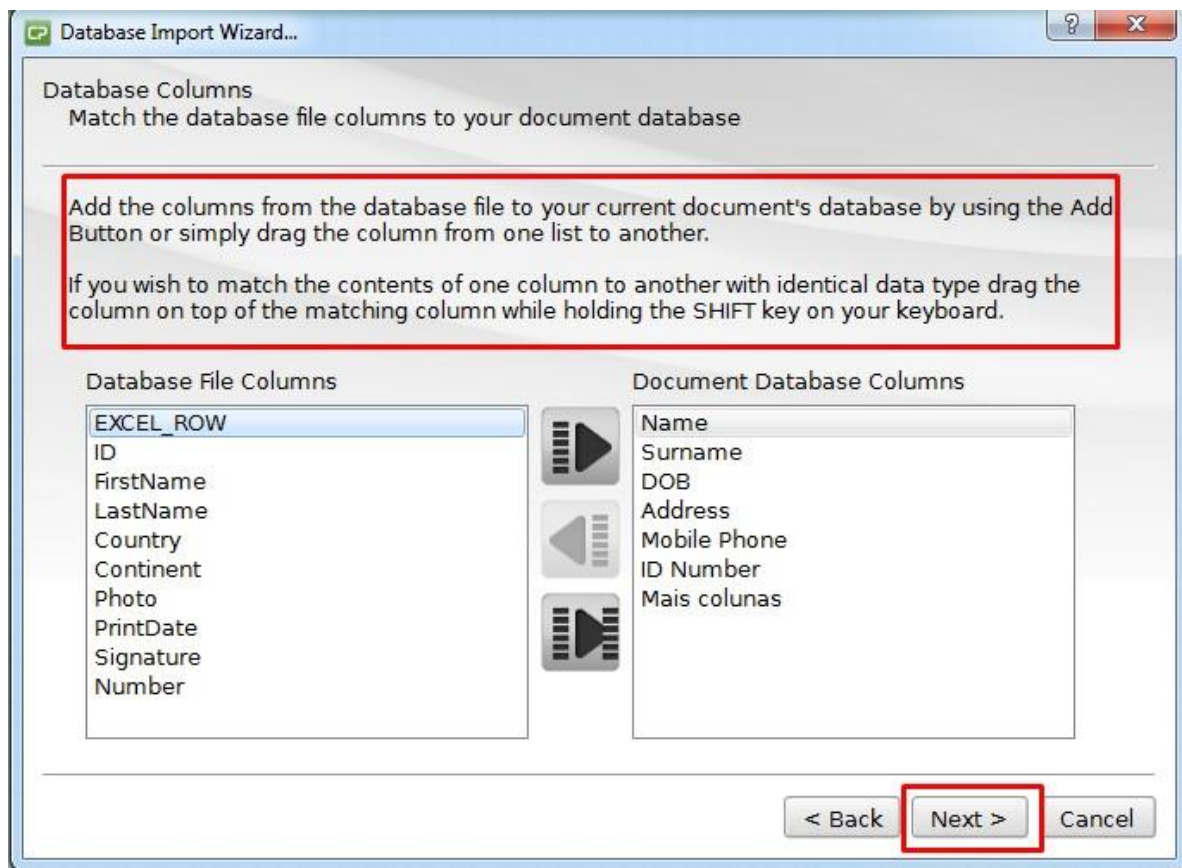


After clicking **Next**, you will be prompted to browse for the database file in your computer and depending on the database type, a configuration is necessary.

With Excel databases, please define the Fields with dates as **Date** type.



It is possible to match content on your original database to columns with the same data type in the SQL Lite database or simply add the columns (and their data) of your original database to the new. If you intend to use this last method, please note that duplicate column names are not accepted. The importation will also duplicate any record that has been previously imported into the database.



After clicking **Next**, the data import occurs and if successful, the wizard closes.

