

TECHNOTE

[29/2014]

DATE: November, 2014

AUTHOR: cardPresso TECHNICAL SUPPORT

PRODUCT/AREA: Database

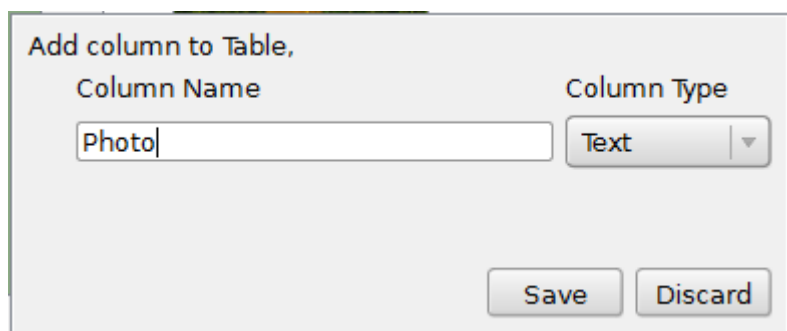
Subject: Document Internal Database – Indexed Images

Storing the image data as a BLOB inside the database is a feature available only from XM Edition onwards.

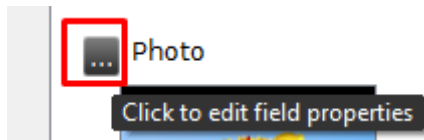
As an alternative for other Editions, it is possible to use Indexed Images. This requires all the images to be stored in the same folder in your computer.

To index an image from your computer's disk to the document Internal Database please follow the sequence on the print screens below:

Add a new column with **Column Type** Text into your database.

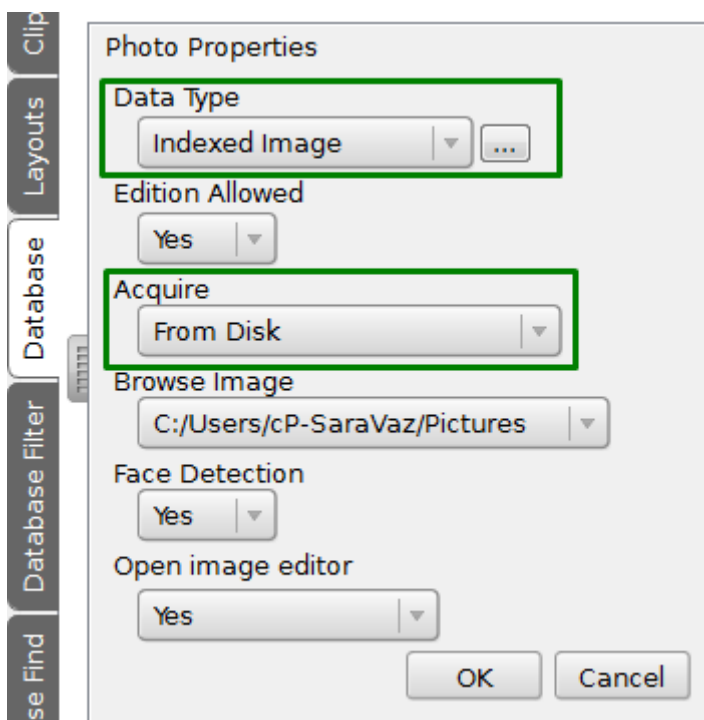


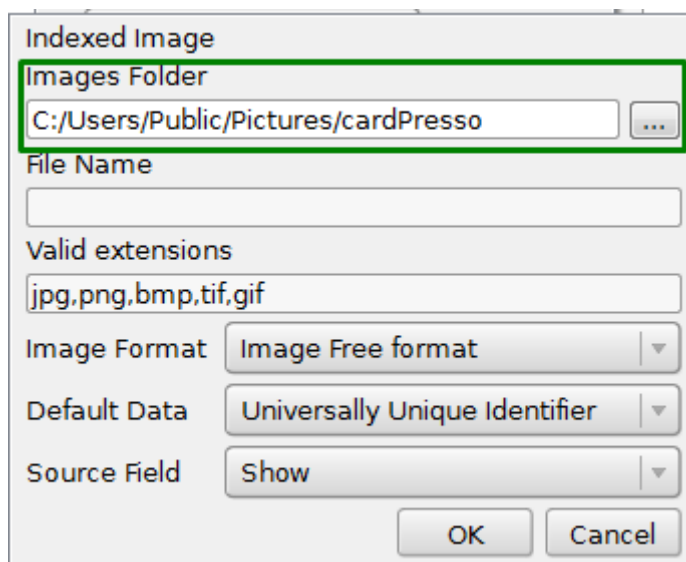
Click the button with 3 dots (highlighted in the print screen below) to the left of the name of the column where the image will be stored to access its properties.



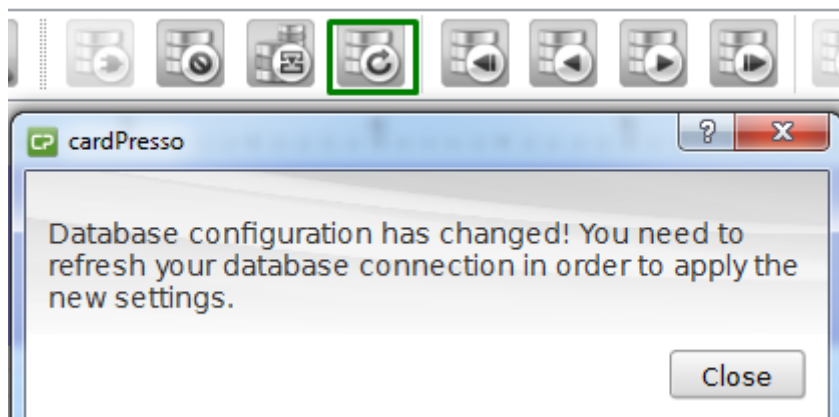
Configure them and refresh the connection in the end. The configuration required is:

- 1- Set the **Data Type** as Indexed Image and click the button with three dots to its right.
- 2- In the **Image Folder** area, browse your computer for the folder where the images are saved. The **File Name** text box must remain empty. Click OK.
- 3- Set the **Acquire** option as From Disk. If you don't intend to use **Face Detection** set it and the **Open image editor** options to No. Click OK.





4- Refresh the database connection as prompted.



Write the exact name of the image on the corresponding text box, save the record and refresh the database connection.

