

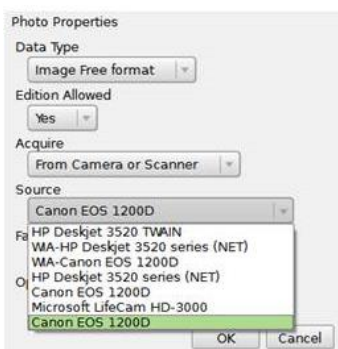
TECHNOTE

[57/2014]

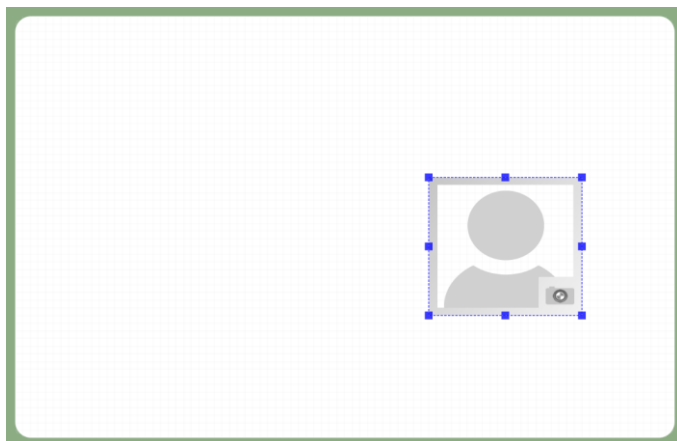
DATE: Dec 19, 2014
AUTHOR: cardPresso TECHNICAL SUPPORT
PRODUCT/AREA: Devices

Subject: Document Internal Canon EOS Devices

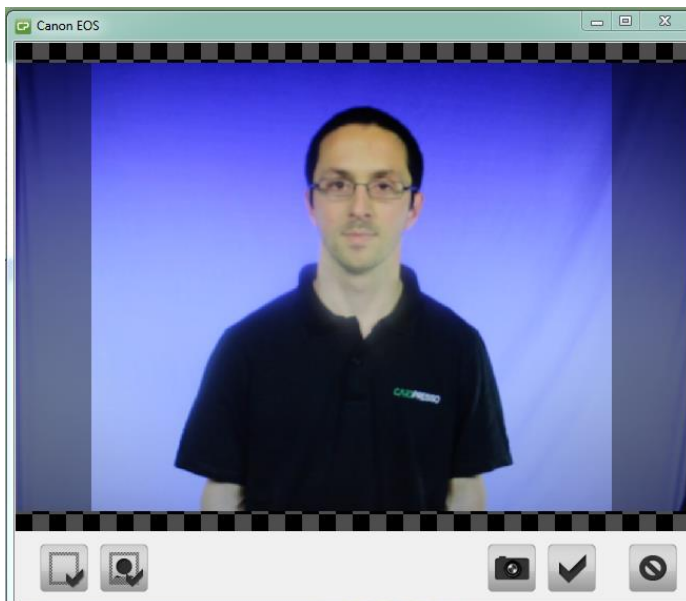
In cardPresso, confirm that camera's SDK is selected as source.



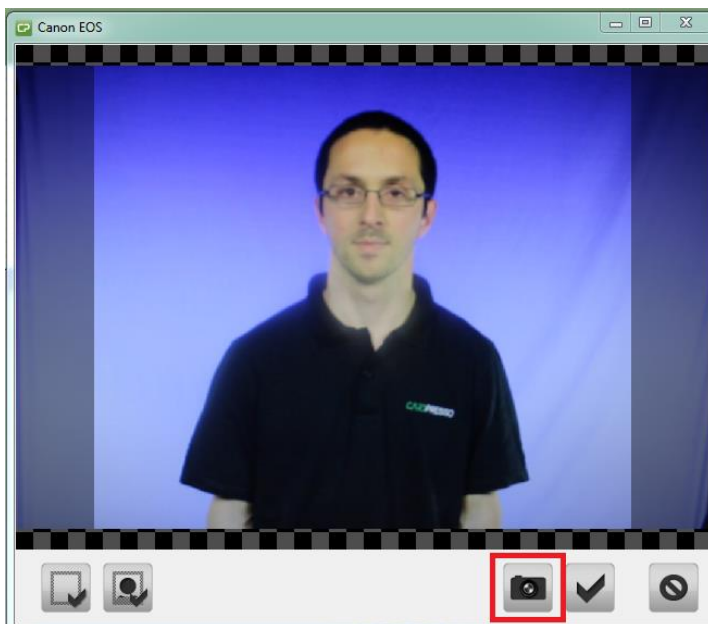
After that please double-click in the image item.



Live acquisition window will pop-up.



When you are ready to take a photo click in the button with a camera icon.



That's it! Now you have the image acquired with the quality defined in your camera's settings. Click „Grab Image“ to accept the capture or „Close Window“ to cancel this operation.