

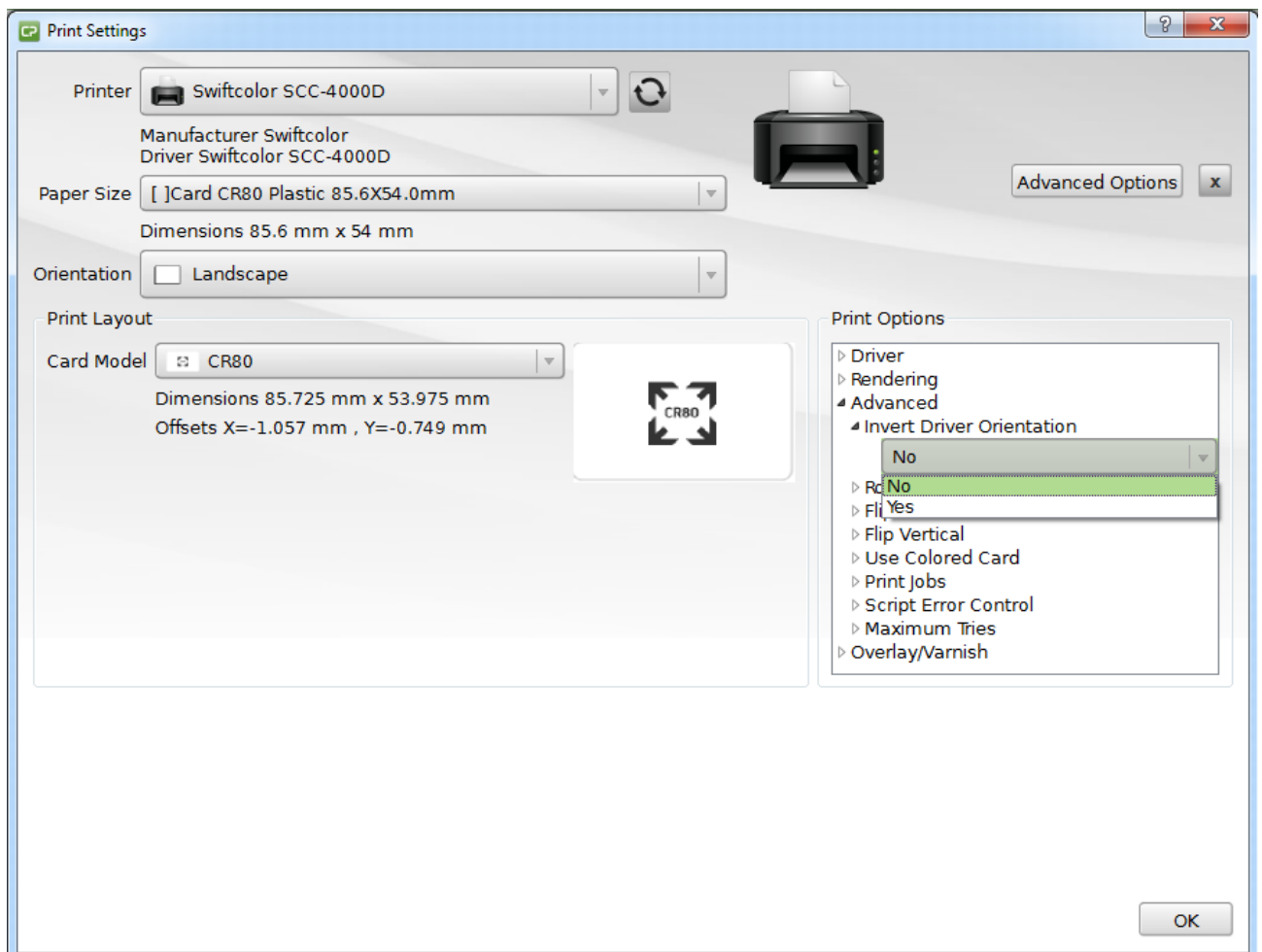
## TECHNOTE [59/2014]

DATE: DECEMBER, 2014  
AUTHOR: cardPresso TECHNICAL SUPPORT  
PRODUCT/AREA: Printing

## Configurations to Print with Swiftcolor SCC-4000D

Due to issues detected when printing to Swiftcolor printers a new option has been added in the "Print Settings" from cardPresso 1.3.93 and above.

When the width of a card is bigger than the height of the card, for example card sizes CR80 and Business cards, the option "Invert Driver Orientation" has to be changed to "Yes".



For the card sizes like "3.5 X 5.5" this change isn't needed.