

TECHNOTE

[24/2015]

DATE: June, 2015
AUTHOR: cardPresso TECHNICAL SUPPORT
PRODUCT/AREA: Encoding

Subject: How to install the Elatec TWN4

Access the ELATEC Support page for the Encoder Driver through [HERE](#).



RFID Systems > Download Center > 13022013

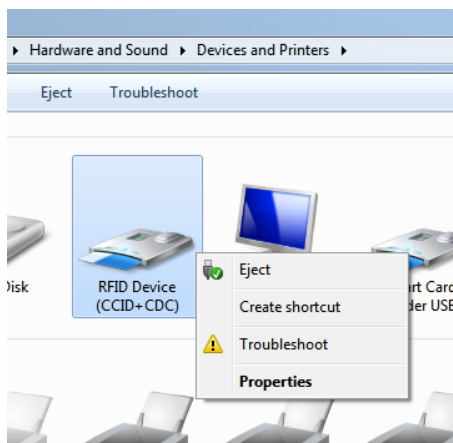
Home	DOWNLOAD CENTER	SUPPORT CENTER	REMOTE SESSION
Profile	TWN3 & TCPConv DevPack	Open a Ticket	Start
News	TWN3 Datasheet		
Products	TWN4 Datasheet		
Application			
NFC			
Support			
YouTube			
Partners			
Contact			

Frequency	Product	Version	Date	Language	Download
125kHz+13.56MHz	TWN4 MIFARE NFC	DevPack164b	13.04.2015	English	17.36 MB
125kHz+13.56MHz	TWN4 LEGIC NFC	DevPack164b	13.04.2015	English	17.36 MB
125kHz	TWN3 Multi125 - General	DevPack439	21.02.2013	English	1.62 MB

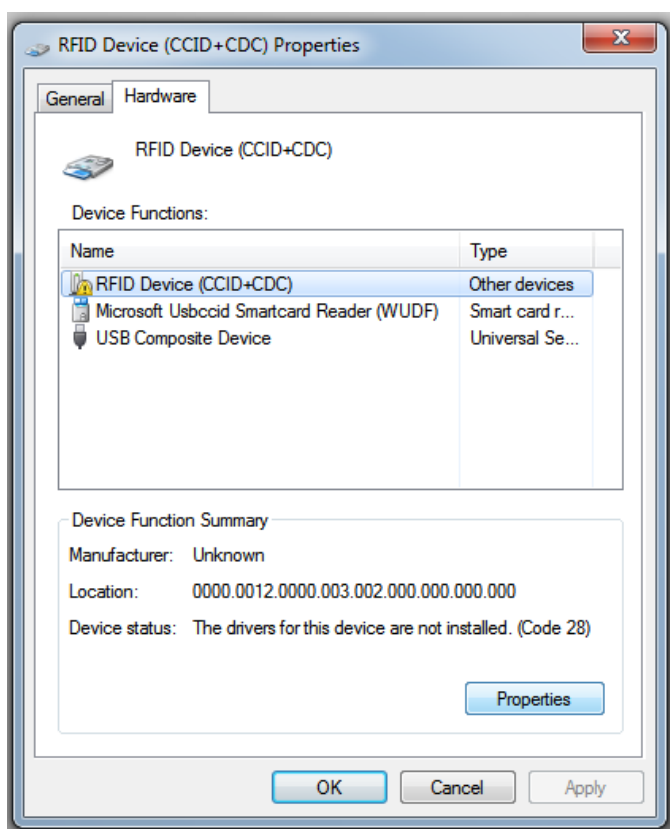
Download the driver and extract its contents.

When connected for the first time, the device will be recognized by the system as "RFID Device (CCID + CDC)"

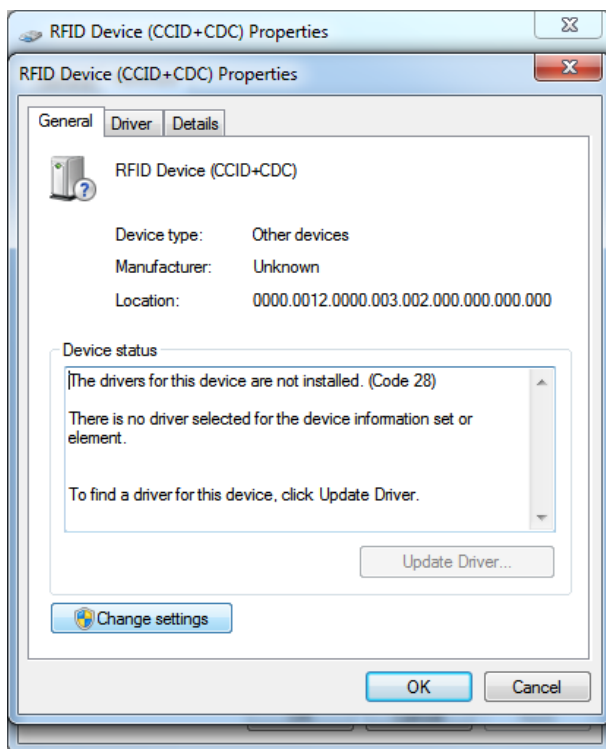
Right click on it and chose **Properties**.



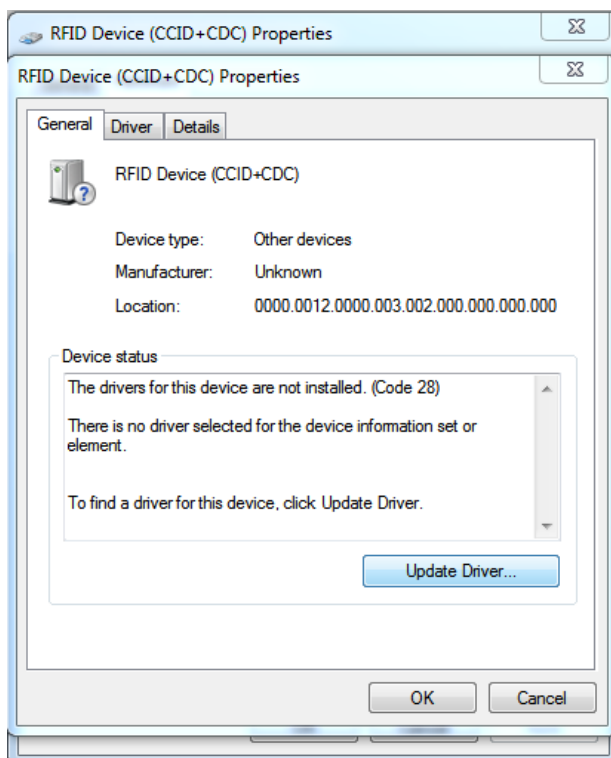
Go to the **Hardware** tab, select the "RFID Device (CCID + CDC)" and click on the "Properties" button.



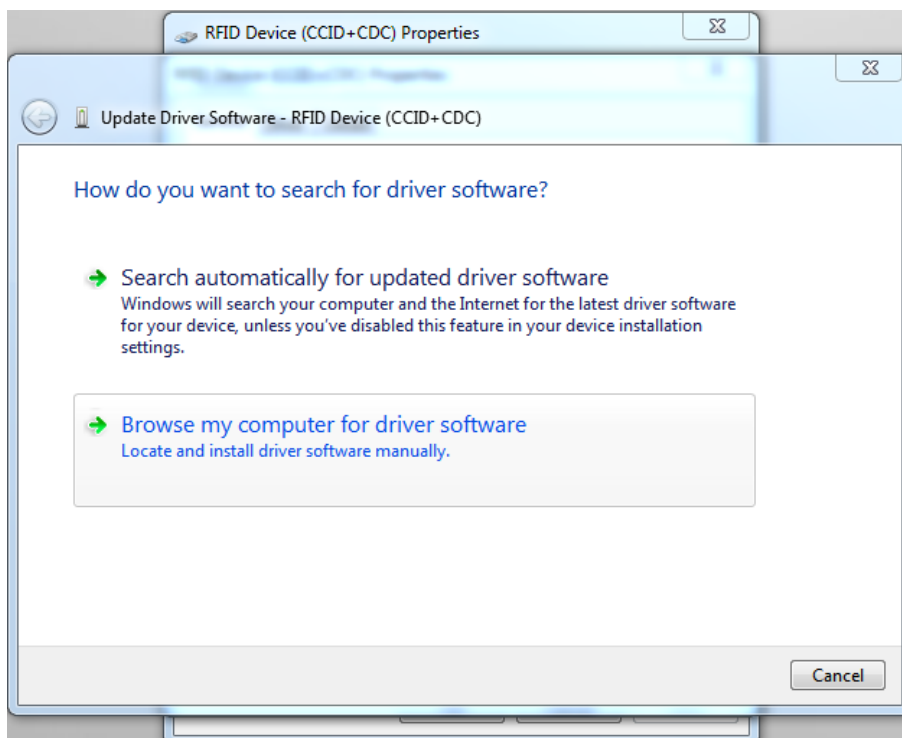
In the properties of the device, click on **"Change settings"**.



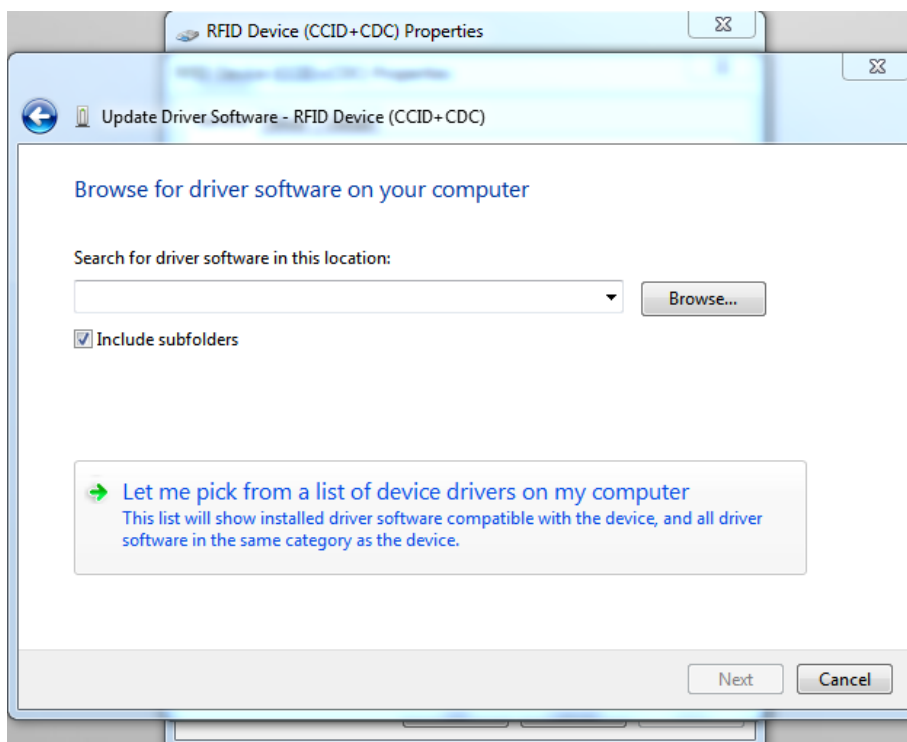
Click on **"Update Driver ..."**



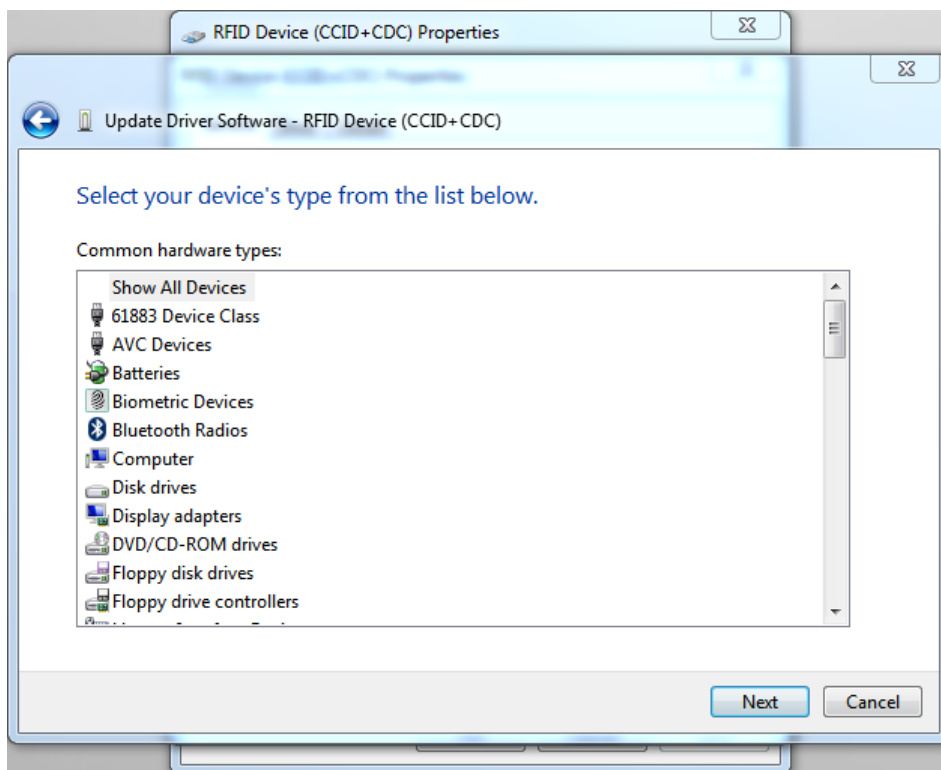
Select the **"Browse my computer for driver software"**.



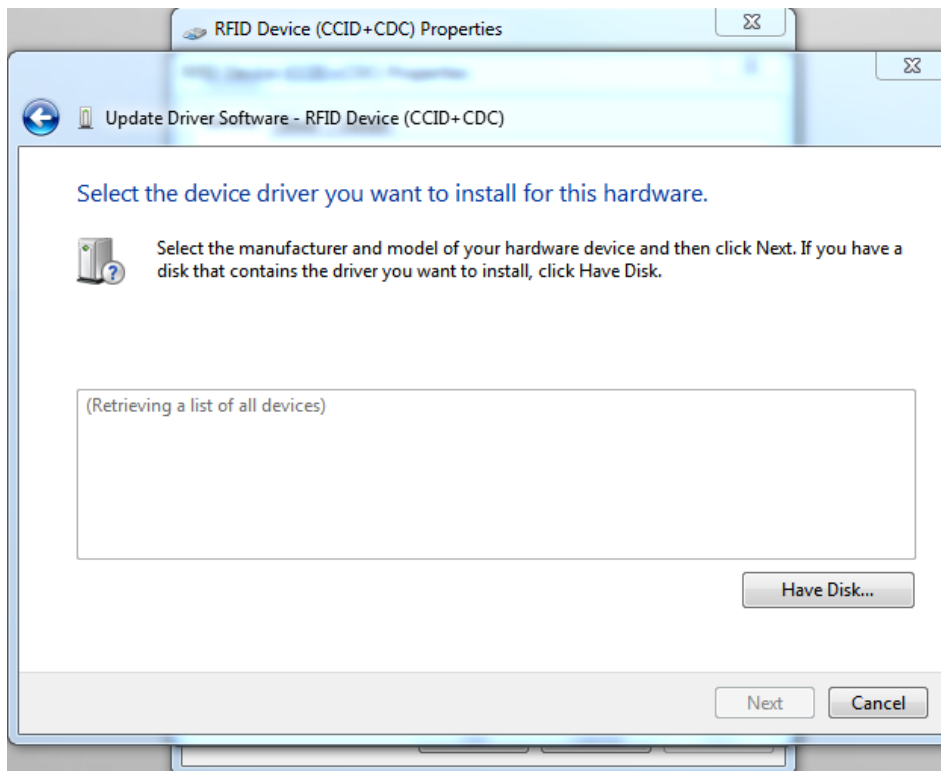
Select **"Let me pick from a list of device drivers on my computer"**.



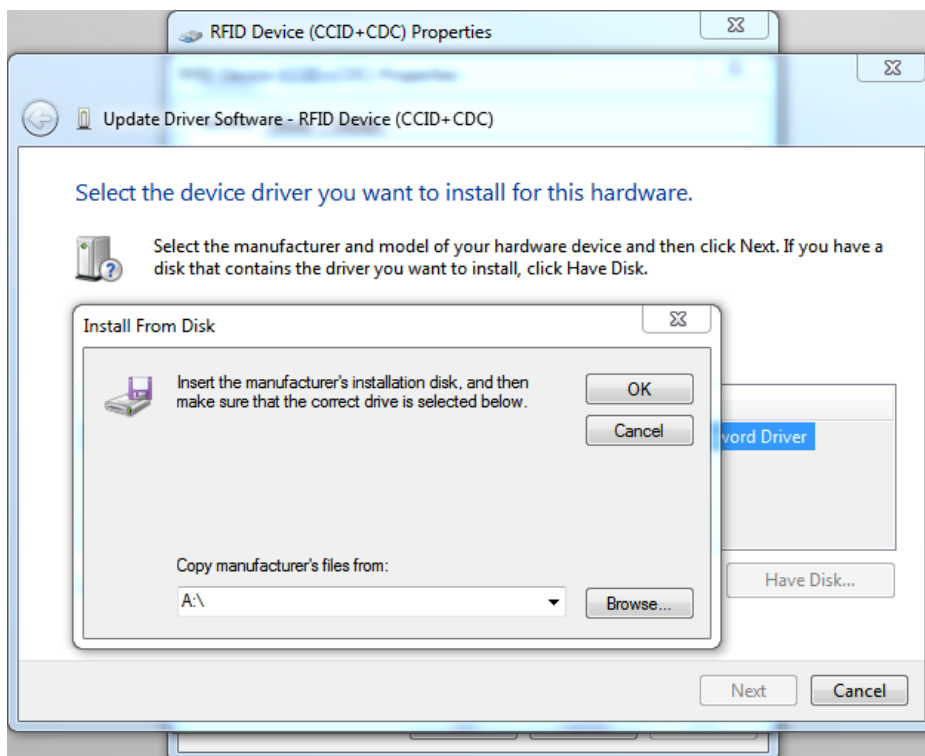
Select **"Show All Devices"** and click on **Next**.



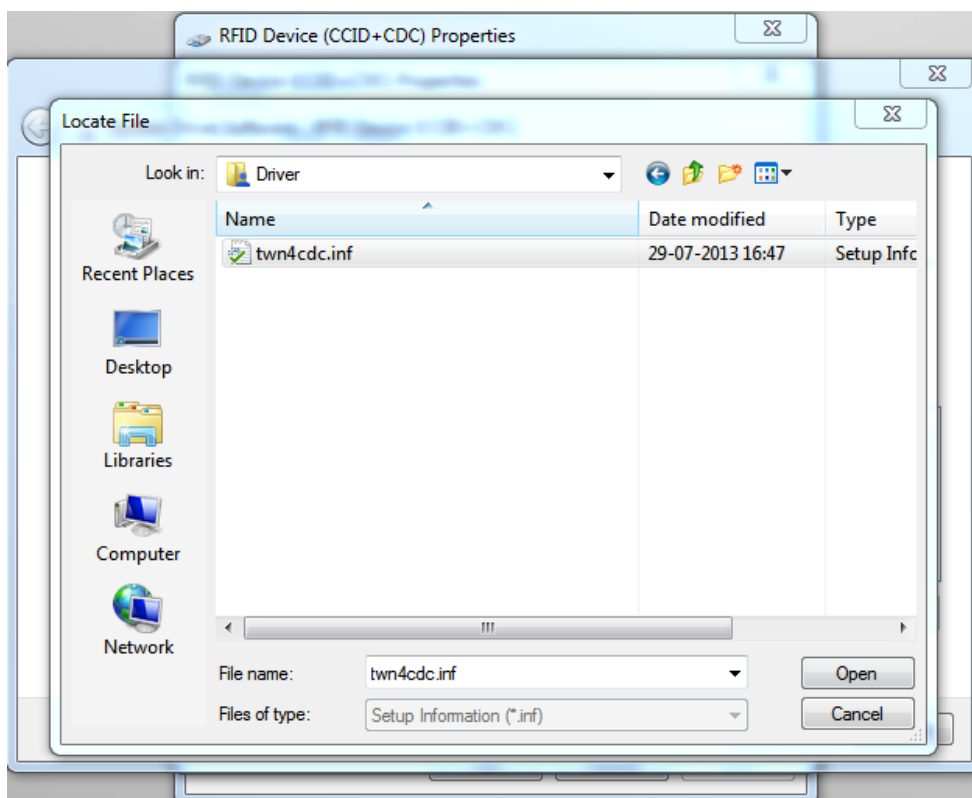
Click on the **"Have Disk ..."** button.



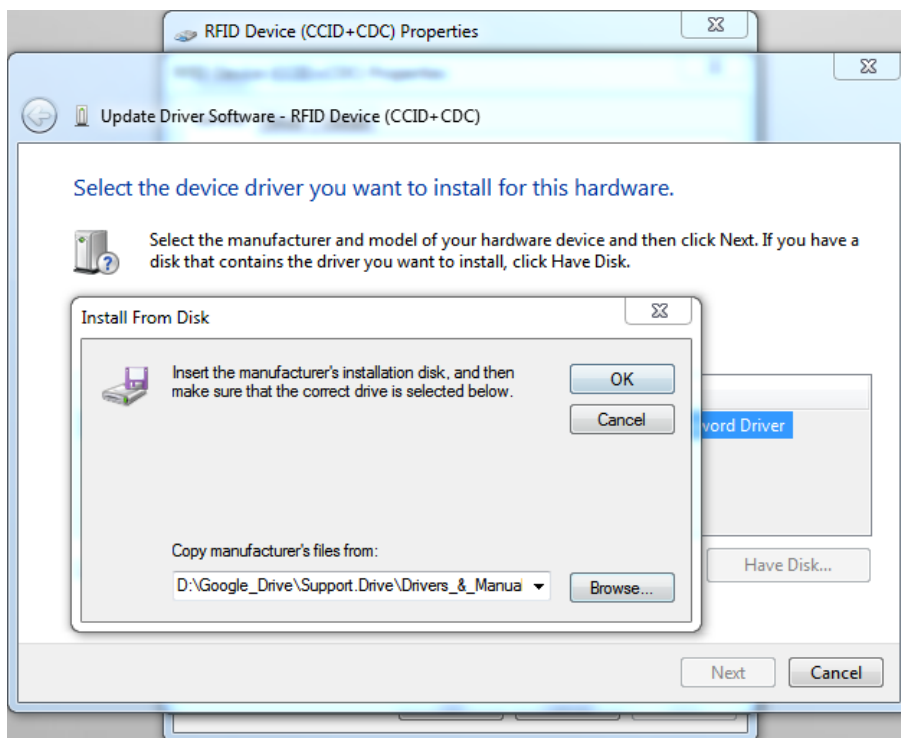
Click on the **"Browse"** button.



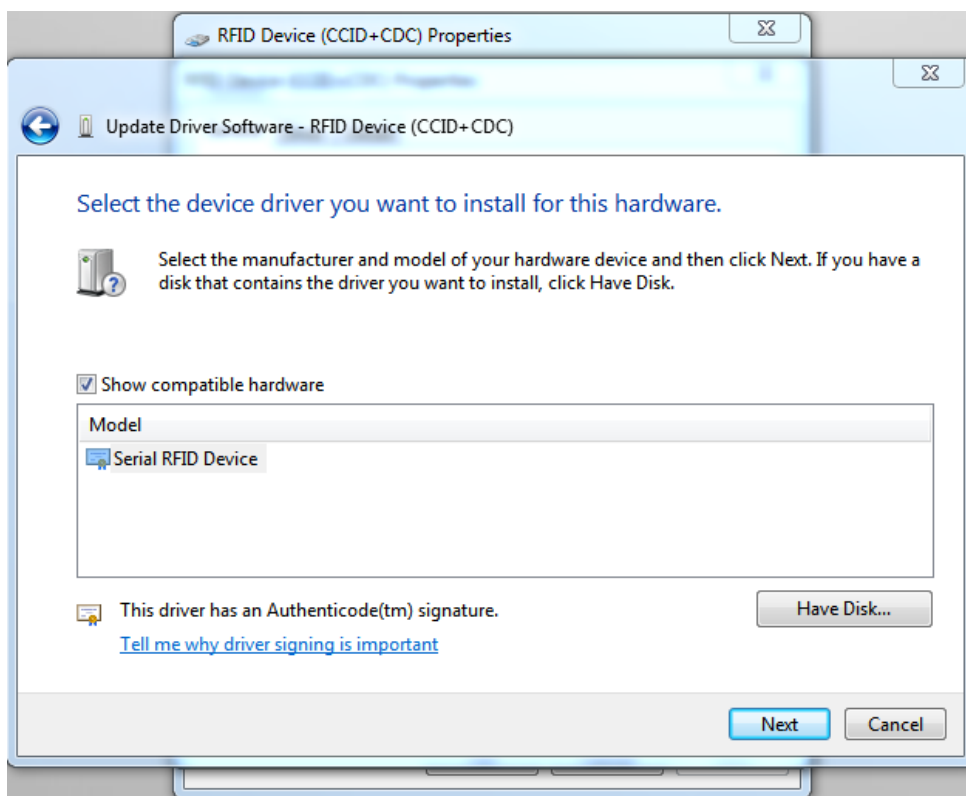
And browse to the **Driver** folder, select the **twn4cdc.inf** file and click on **Open**.



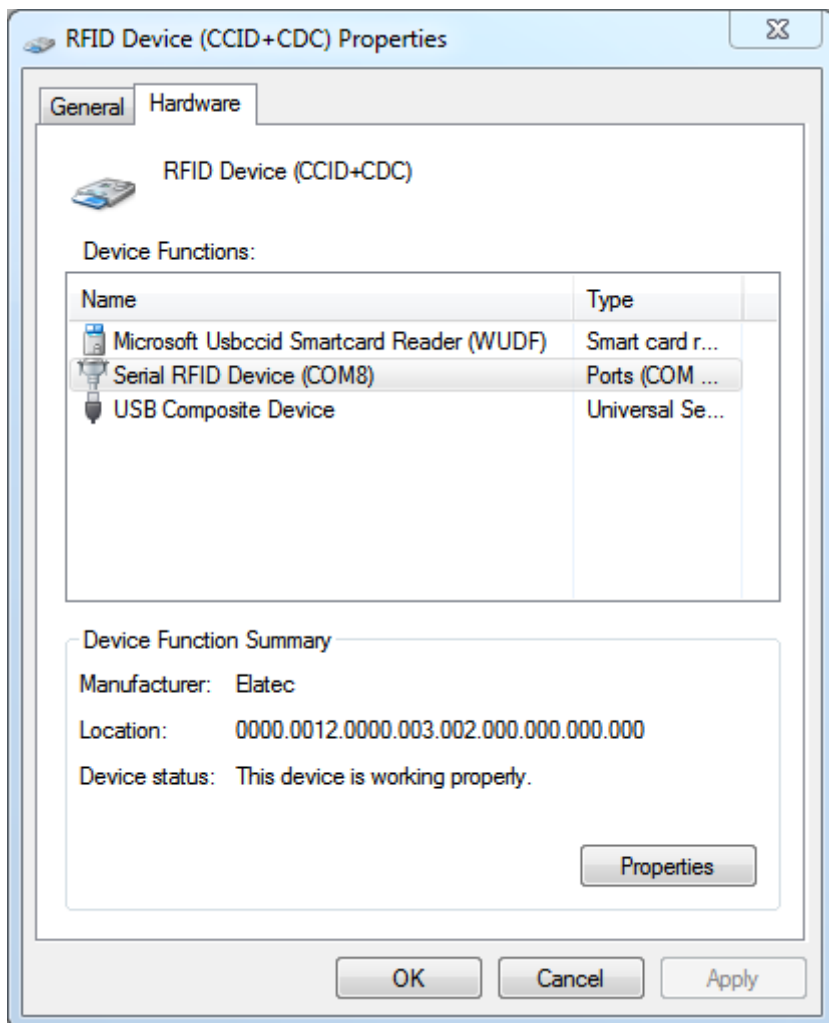
Click on **OK**.



Select "**Serial RFID Device**" and click on **Next** until the window closes.

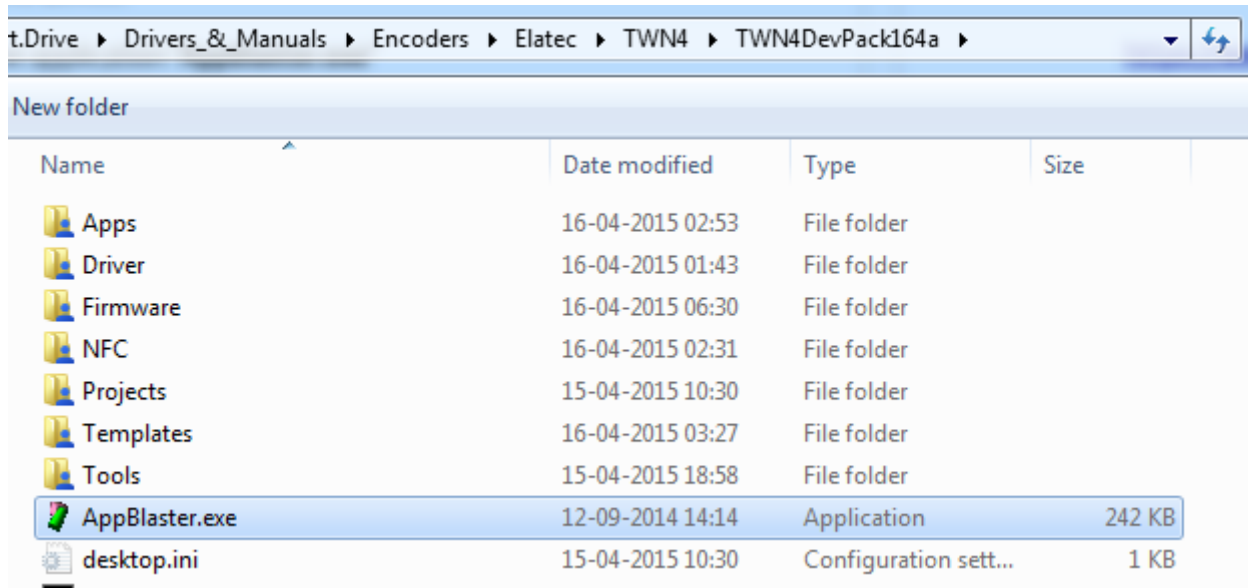


At this point, if you close and open the "RFID Device (CCID + CDC) Properties" the device won't have a warning sign and it will be correctly recognized as a "Serial RFID Device" assigned to a COM port.

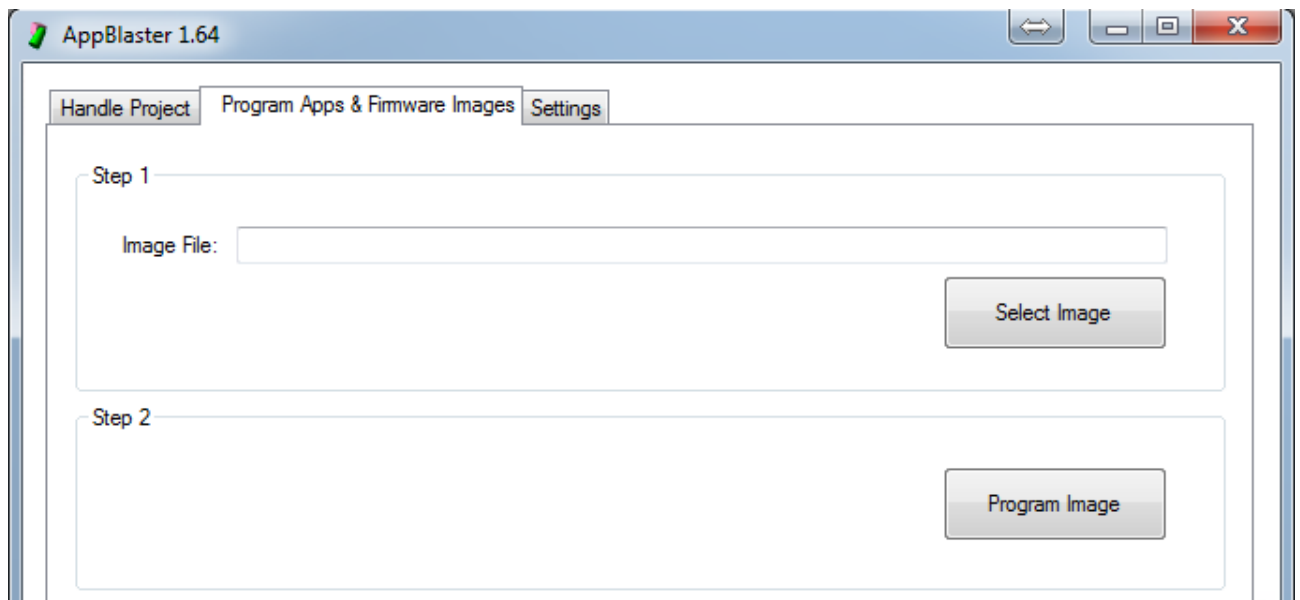


Now we need to update the Firmware of the device.

To update the firmware we need to run the application "AppBlaster.exe"

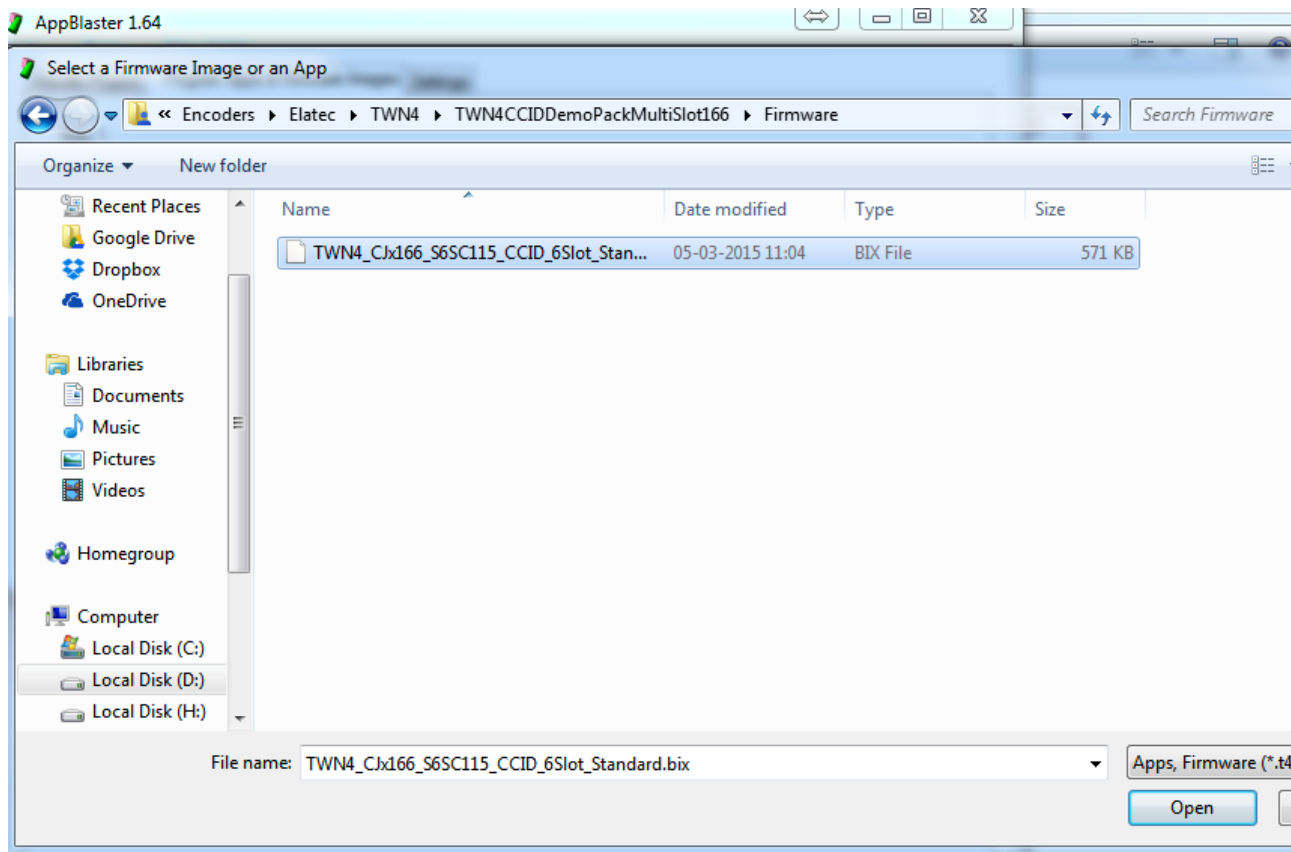


Change to the "Program Apps & Firmware Images" and click on "Select Image".

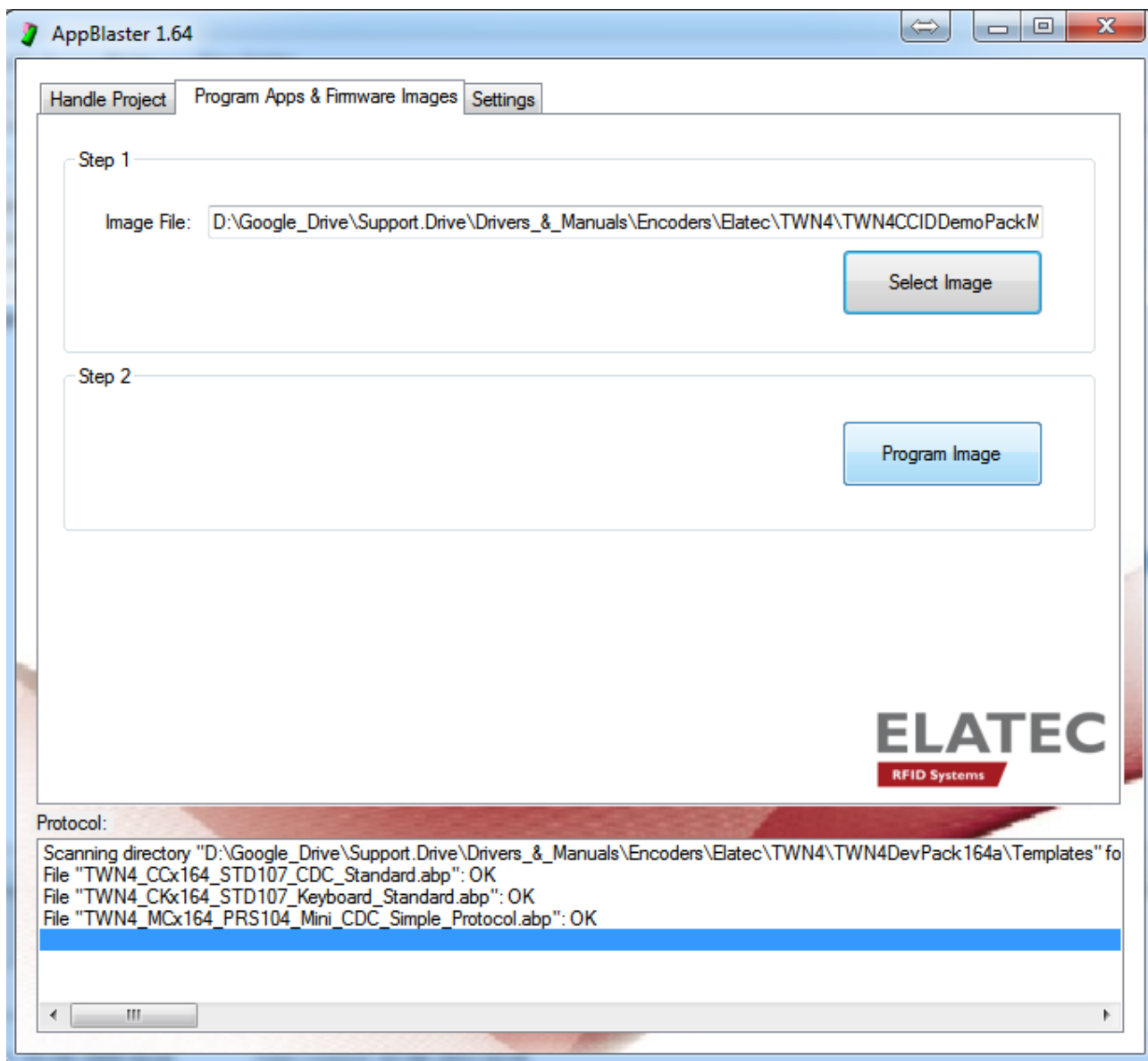


The Firmware image needed, can be downloaded [HERE](#).

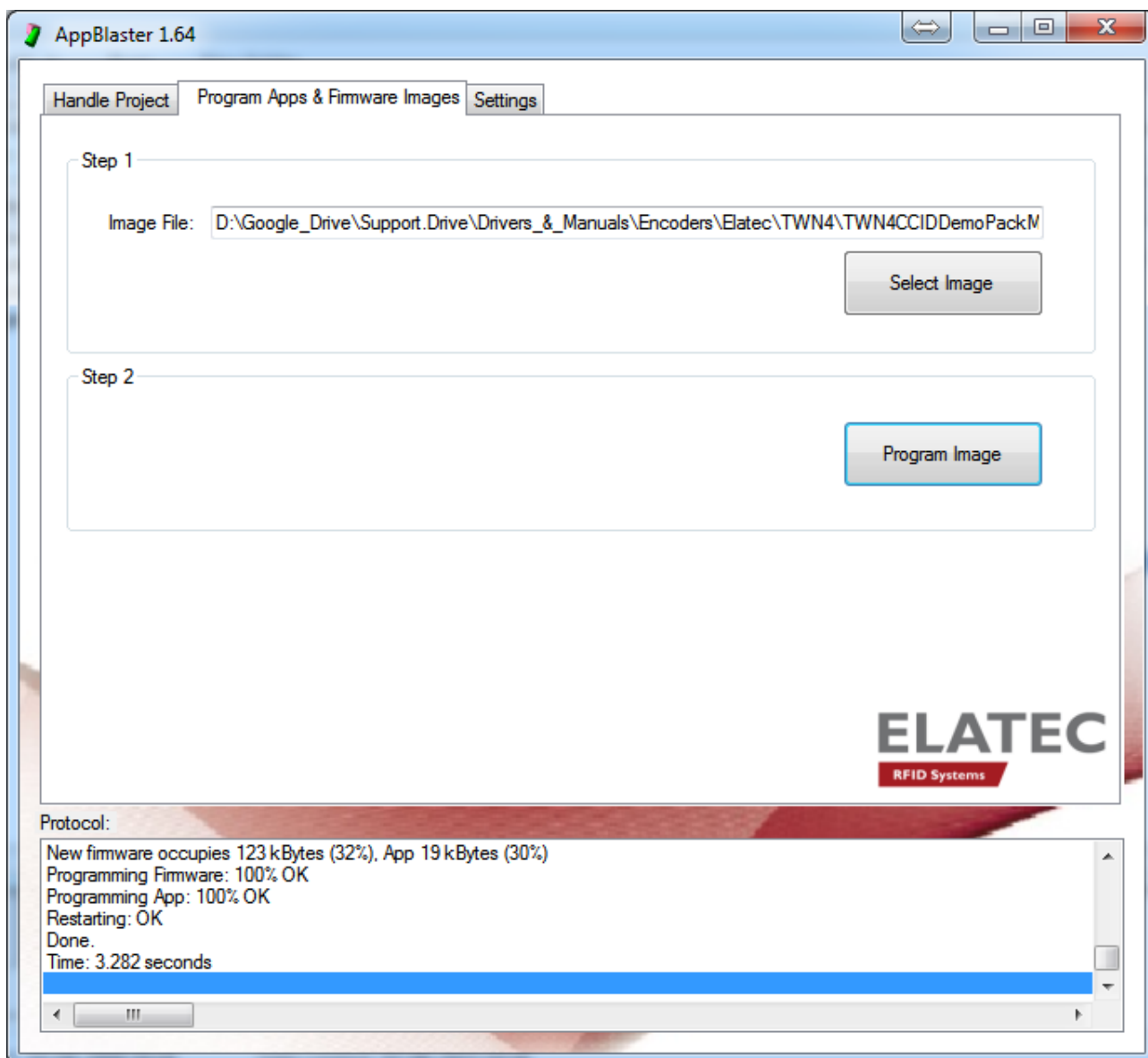
In **AppBlaster**, browse to the file and click on **Open**.



Click on "Program Image" in Step 2.



First try might return an error. Let Windows re-install the device by itself and click on Program Image again until it returns a message as below.



After these steps, the Encoder will be available in cardPresso with the name "OEM RFID Device (CCID + CDC)".

